



PROJECT		REF		REV	ITEM CODE	
LOCATION		DATE			PAGE	

# SANITARY WARE SPECIFICATION SHEET

Item Descriptions	Stern (Israel) "Extreme CS AISI316" Stainless steel AISI316 wall-mounted sensor faucet in AC Supply with 5m wire AC 110-240 Vac 50/60Hz to 9V 0.3A <b>IP68 waterproof switching transformers</b>	Illustration/ Drawing
Dimensions	195 mm Long	
Model	Extreme CS E AISI316	
Code Number	237800-316	
Finish	Stainless Steel AISI316	
Supplier	Acme Sanitary Ware Co. Ltd Mr. Eric Wong/ Mr. Don Yuen	
Contact Tel/Fax E-mail Website	(852) 2388-7171 / (852) 2710-8012 acme@acmesanitary.com.hk www.acmesanitary.com.hk	

**EXTREME CS E AISI316 Ref # 237800-316**

Touch-free wall-mounted electronic faucet. For cold or premixed water. Activated by concealed sensor built into the spout. Stainless Steel body, other finishes available. Includes a low battery indicator. The Adjustable settings by remote control: sensor range, security time, delay in, delay out, on-off and reset to factory settings.

**Application:**

Wall-mounted faucet. Combines a minimalistic design with vandal resistant features. Helps washrooms stay clean and saves water. Ease installation. Long lasting even in the harshest installation sites. Ideal for shopping malls, sport facilities and entertainment centers.

**Use:**

With Proximity sensor: The faucet will automatically activate when users place their hands in the sensor range and will stop once the users remove their hands.

With Wave on-off sensor: The faucet will activate for an 8-second flow time when users place their hands in close proximity to the sensor. Removing the hands stops the faucet operation. Flow time is adjustable on site.

**PRODUCT AT A GLANCE**

Installation	Duct Concealed
Power Supply Options	• IP67 Dual power input box with a 9V battery • 9V Transformer
Operating pressure	0.5 - 8.0 BAR (7 - 116 PSI). With a pressure over 8 bar, use a pressure reducing valve.
Water supply	Cold or premixed water
Flow time	8 seconds. Adjustable with the Stern remote control
Water Saving options	4 LPM / 1.0 GPM - PCA spray
Water temperature	70°C Maximum
Security Time	Auto shutoff after 90 seconds. adjustable by remote control

**ORDERING INFORMATION**

MODEL	CODE	POWER
Extreme CS AISI316 E	237800 - 316	9V Transformer
Extreme CS AISI316 B	237801 - 316	IP67 Dual power input box with a 9V battery



**Installation:**

Wall mounted duct concealed



**Water supply:**

Cold or premixed water (1 inlet)



**Water temperature:**

Max 70 °C



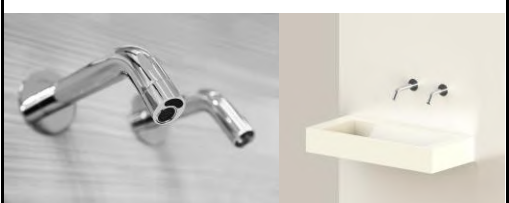
**Operating pressure:**

0.5 - 8.0 bar



**Power source:**

9V Transformer

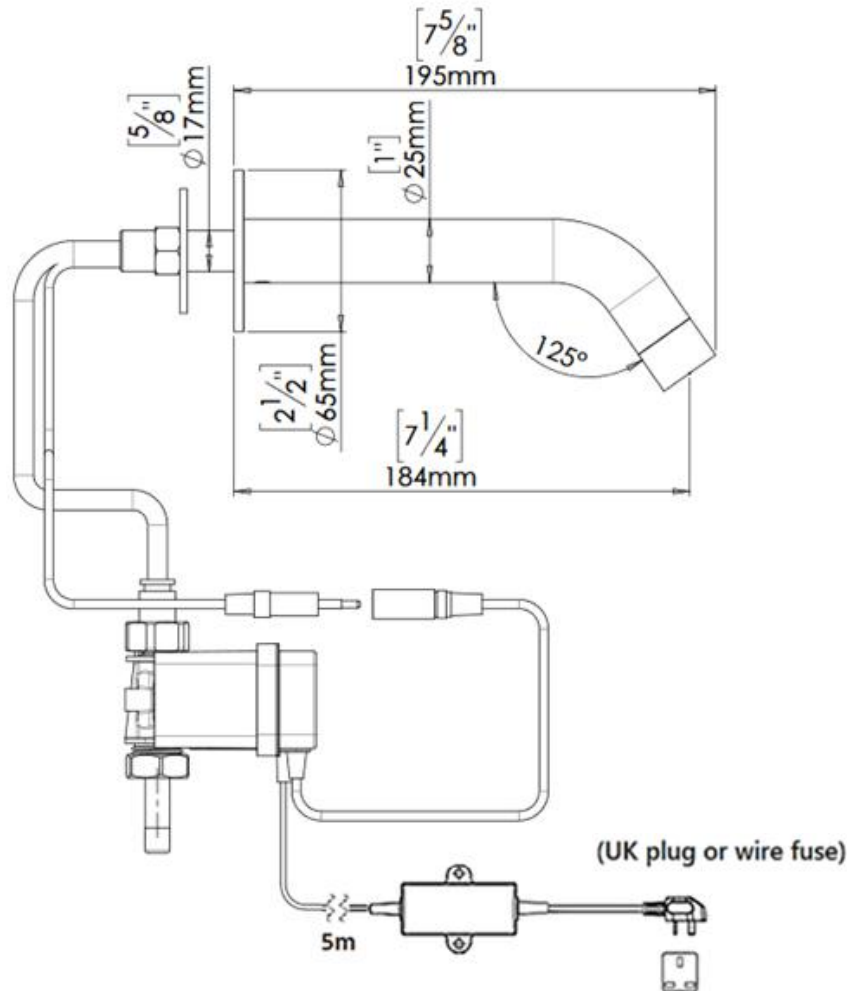


\*All information of the above is for the reference only. No prior notice is made if any changes.



## SPARE PARTS LIST

### Extreme CS E AISI316 (237800-316)



### SPARE PARTS

10-Pack Sensor Kit	07220412
10-Pack Solenoid valve kit Extreme CS	07232005
Dual Power Input Box	06530042
12-Pack 9V Transformer (EU)	TBC
10-Pack Diaphragm	04500048
Remote Control (Optional)	07100005
Soap & Water Remote Control (Optional)	07100014



**Note:** In order to locate the relevant spare part, please check the corresponding parts and part number in the drawing. Minimum order quantity will be required.

*\* All information of the above is for the reference only. No prior notice is made if any changes.*



## INSTALLATION

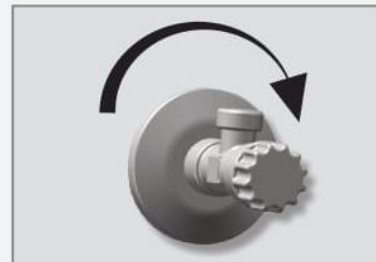
## EXTREME CS E/B

**Note:** Prior to installation flush water lines.

### STEP 1 – INSTALLING THE FAUCET

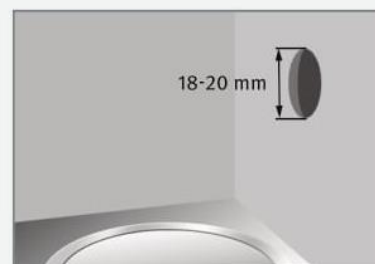
1

Shut off the water supply.



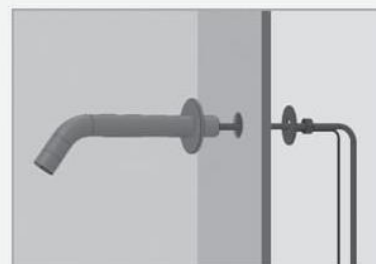
2

Drill a hole (18 to 20 mm) in the location you wish to install the faucet.



3

Insert the faucet base through the wall and fix it firmly on the opposite side with the hexagonal nut and the disk.





## INSTALLATION

### STEP 2 – CONNECTING THE WATER SUPPLY

- Remove the plastic tip that is inserted in the end of the black flexible tube.
- Connect the dual power box to the water supply lines.
- Connect the black flexible tube to the quick connector on the top of the dual power box.
- Place battery into the Dual Power input box.



### STEP 3 – CONNECTING THE POWER SOURCE

1

Turn on the central water supply. Check for leaks. Remove the protective sticker from the sensor.

2

Connect the power source.

3

Once the power source is connected, wait 15 seconds to allow the system to set the ideal sensor range. A LED will flash continuously to indicate this adjustment period. The solenoid valve will open for 1 second to indicate that the ideal sensor range was set.



2

If the automatically adjusted sensor range is not satisfactory to your purposes, please refer to the section entitled “Settings adjustment”.





# TROUBLESHOOTING

PROBLEM	INDICATOR	CAUSE	SOLUTION
No water is coming out of the faucet:	1. LED light in the sensor does not flash once when user's hands are within the sensor's range.	1. Range is too short.	Increase the range
		2. Range is too long.	Decrease the range
		3. Unit is in "Security Mode"	
		4. Sensor is picking up reflections from the washbasin or another object.	Eliminate the cause of reflection.
	2. LED light in the sensor flashes once when user's hands are within the sensor's range.	1. Debris or scale in solenoid.	Unscrew solenoid, pull out the plunger and the spring from the solenoid and clean them. Use scale remover material if needed. When replacing the plunger, please make sure that the spring is in vertical position.
		2. The central orifice in the diaphragm is plugged or the diaphragm is torn	Clean the orifice or replace the diaphragm.
		3. The water supply pressure is higher than 8 bar.	Reduce the supply water pressure.
		4. The water supply pressure is under 8 bars and yet the pressure in the faucet's body is higher. This situation could be caused by a sudden increase in the water supply pressure that the backcheck prevents from dropping, even after water supply pressure drops under 8 bars.	Shut off the water supply and unscrew one of the flexible pipes in order to reduce the pressure that blocks the product.
Water flow from spout does not stop:	1. Sensor flashes once when user's hands are within the sensor's range.	1. Debris or scale in diaphragm	Clean the orifice or replace the diaphragm.
		2. Connectors between the electronic unit and the Dual power input box are disconnected or not connected properly	Connect the connectors properly. <i>Refer to page 11.</i>
	2. LED light in the sensor does not flash once when user's hands are within the sensor's range.	1. Sensor is dirty or covered.	Clean or eliminate the cause of interference.
		2. Sensor is picking up reflections from the washbasin or another object.	Decrease the range or eliminate the cause of reflection.
Water flow diminished		Filter or aerator is clogged	Remove, clean, re-install the filter or aerator

\* "Security Mode": If the sensor is covered for more than 90 sec. the faucet will automatically shut off water flow. To return to normal operation remove any blockage to re-establish operation.